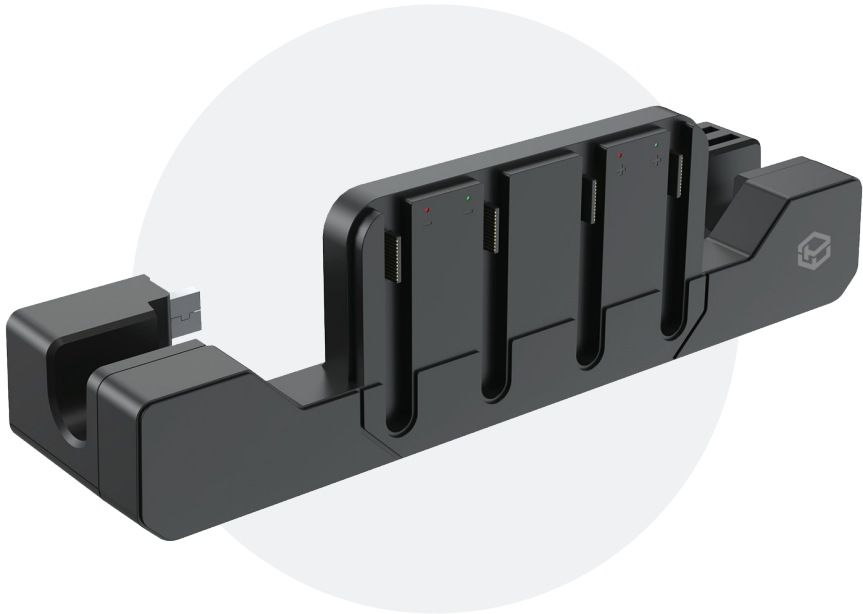




POWERWAVE
ACCESSORIES

JOY-CON CHARGING DOCK

INSTRUCTIONS



Contents

PRODUCT OVERVIEW	2
INSTALLATION INSTRUCTIONS	2
ELECTRICAL SPECIFICATIONS	2
CONTENTS	3
PRODUCT CARE AND SAFETY	3



POWERWAVE
ACCESSORIES

JOY-CON CHARGING DOCK

INSTRUCTIONS

Product Overview

The Powerwave Joy-Con™ Charging Dock provides an easy, fun solution to charge up to 4 Joy-Con Controllers while still having full access to your Switch 2 Dock.

The Joy-Con Charging Dock easily attaches to your official Switch 2 Docks USB port, no extra cables required. Simply use the magnetic connectors to attach your Joy-Cons and the LED indicator light will light up red when charging and green when fully charged.

Installation Instructions

- Gently pull the cartridge holder away from the Charging Dock to detach it
- Insert the USB-A plug into the bottom port on the back of your Switch 2 Dock
- Insert the cartridge holder back into your Charging Dock
- Connect your Switch 2 Dock to power. The charging indicator lights on the front of your Charging Dock will illuminate, indicating the device is receiving power and is ready to charge your Joy-Cons
- Connect your Joy-Cons to the magnetic ports on the front of your Charging Dock to begin charging. Ensure that your left Joy-Cons are connected to the left two chargers, and your right Joy-Cons to the right two chargers
- The indicator lights will illuminate red when charging and green when fully charged or not in use

Electrical Specifications

Input Voltage:	5V
Input Current:	2A
Output Voltage:	5V
Output Current:	250mA x4



POWERWAVE
ACCESSORIES

JOY-CON CHARGING DOCK

INSTRUCTIONS

Contents

- 1x Charging Dock

Product Care and Safety

- Keep your user manual for future reference.
- Use this device solely for its intended purposes.
- For indoor use only.
- Keep away from hot surfaces and naked flames and liquids.
- When not in use, store in a cool, dry environment away from direct sunlight.
- Do not apply force or put heavy objects onto the product.
- If the product is damaged, broken or immersed in water, stop use immediately.
- Do not attempt to repair, modify or disassemble the product.
- Clean with a soft, dry cloth to prevent dirt build-up. Do not use chemical solvents, detergents or alcohol.
- Keep out of reach of small children.