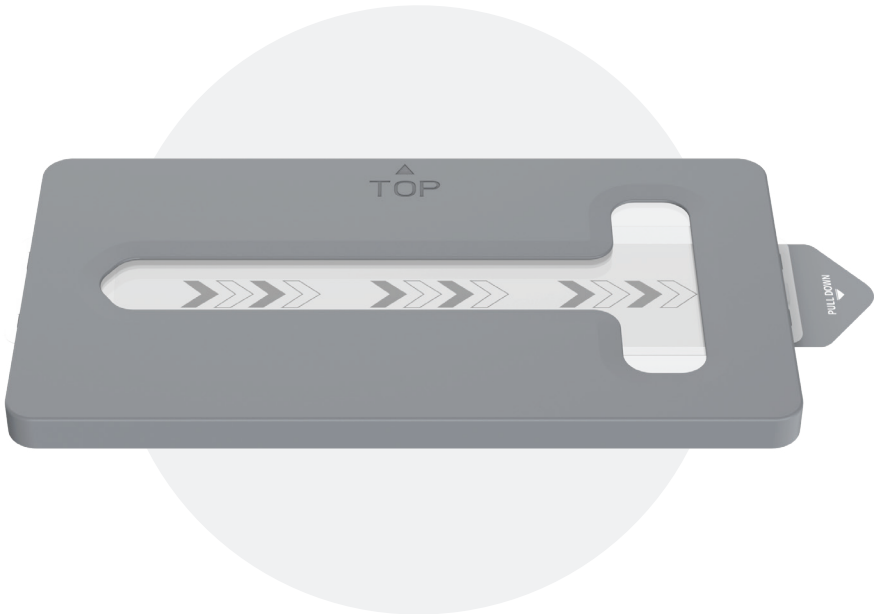




**POWERWAVE**  
A C C E S S O R I E S

# TEMPERED GLASS SCREEN PROTECTOR WITH ALIGNMENT TRAY

## INSTRUCTIONS



### Contents

PRODUCT OVERVIEW.....	2
PRODUCT CARE AND SAFETY .....	2
CONTENTS .....	2
INSTALLATION INSTRUCTIONS .....	3



# TEMPERED GLASS SCREEN PROTECTOR WITH ALIGNMENT TRAY

## INSTRUCTIONS

### Product Overview

The Powerwave Glass Screen Protector with Alignment Tray provides complete protection for your Nintendo Switch™ 2 console screen.

The anti-bacterial coating keeps your console screen clean and the anti-blue light effect prevents eye strain during your gaming sessions, while the included alignment tray ensures easy and precise application onto your console.

### Product Care and Safety

- Keep your user manual for future reference.
- Use this device solely for its intended purposes.
- For indoor use only.
- Keep away from hot surfaces and naked flames and liquids.
- When not in use, store in a cool, dry environment away from direct sunlight.
- Do not apply force or put heavy objects onto the product.
- If the product is damaged, broken or immersed in water, stop use immediately.
- Do not attempt to repair, modify or disassemble the product.
- Clean with a soft, dry cloth to prevent dirt build-up. Do not use chemical solvents, detergents or alcohol.
- Keep out of reach of small children.

### Contents

- 1x Anti-Bacterial and Anti-Blue Light Tempered Glass Screen Protector
- 1x Alignment Tray
- 1x Cleaning Cloth
- 1x Alcohol Wipes (1x Wet & 1x Dry)



## TEMPERED GLASS SCREEN PROTECTOR WITH ALIGNMENT TRAY

### INSTRUCTIONS

#### Installation Instructions



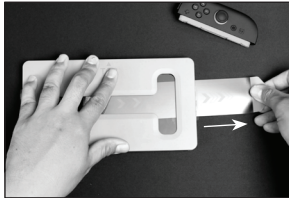
Place your console on a flat surface with the screen facing up.



Clean console surface with wet wipe, follow with dry wipe, finish with cleaning cloth.



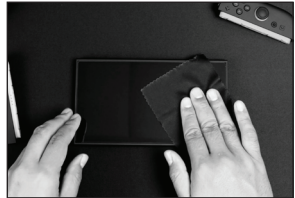
Place the alignment tray face down onto your console, ensuring the tray sits flat against your console. The "top" arrow should be pointing towards the top of your console.



Pull the side tab in a straight direction



Slide your finger from top down over the glass through the gap in the alignment tray to stick the glass screen protector to your console.



Remove the alignment tray from your console and gently run your finger over any air bubbles from the glass screen protector and wipe with a cloth to clean.



If there are any bubbles, slightly lift the corner up until bubbles are gone then place back down into place

Watch Installation  
video here

