

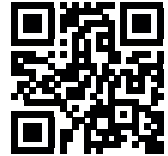


SWITCH OLED GLASS SCREEN PROTECTOR WITH ALIGNMENT TRAY

INSTRUCTIONS

Contains

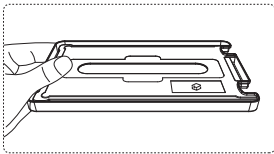
- 1 x Alignment Tray
- 2 x Screen Protector Guide Stickers
- 2 x Glass Screen Protectors
- 2 x Dust Removal Stickers
- 2 x Screen Cleaning Wipes (1 x wet & 1 x dry)



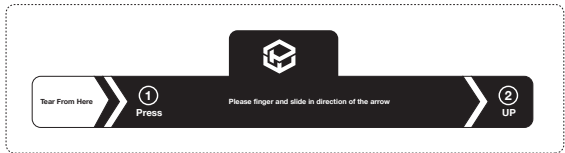
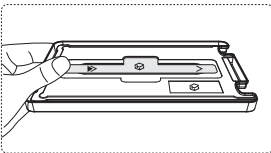
Scan QR code for installation video

Installation Instructions

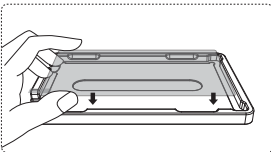
1. Place the alignment tray face down as shown below. The Powerwave logo should be positioned in the lower right corner of the alignment tray.



2. Align the blue screen protector guide sticker with the centre cut-out on the back of the alignment tray and stick down.



3. Flip the alignment tray over & place the glass screen protector in the tray with the protective film covered side facing towards you. Press down gently over the blue guide sticker to hold the glass screen protector in place.



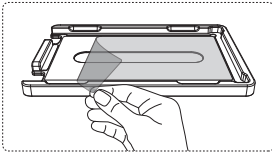


POWERWAVE
ACCESSORIES

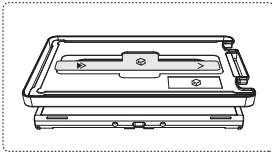
SWITCH OLED GLASS SCREEN PROTECTOR WITH ALIGNMENT TRAY

INSTRUCTIONS

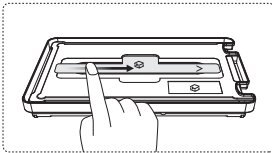
4. Clean the Switch OLED™ console screen with the wet (1) and dry (2) screen cleaning wipes. Once done peel the protective film from the glass screen protector.



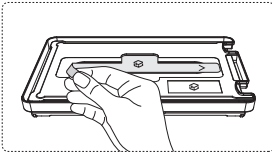
5. Place the assembled alignment tray and glass screen protector face down, over the Switch OLED™ screen with the blue guide sticker facing towards you.



6. Slide your finger, while pressing down, across the blue guide sticker in the direction of the arrows, to stick the glass screen protector to the Switch OLED™ screen.



7. Once the glass screen protector is attached, remove the blue guide sticker from the alignment tray.



8. Remove the alignment tray from the Switch OLED™ screen, scrape out any air bubbles from the glass screen protector and wipe with a cloth to clean.

