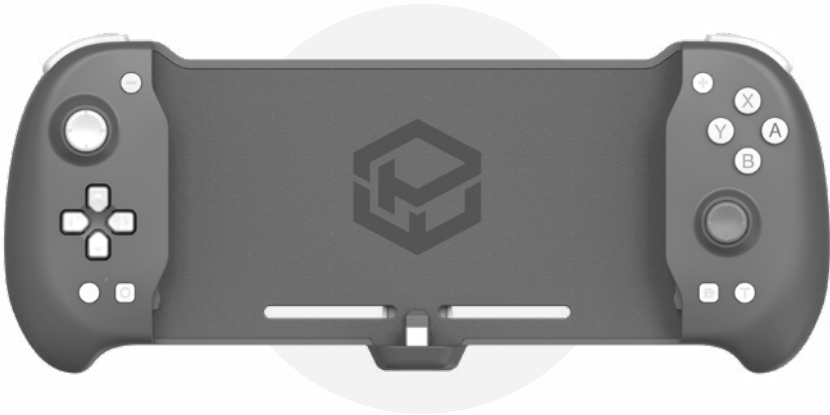




POWERWAVE
ACCESSORIES

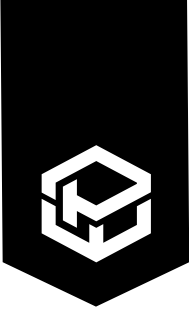
ELITE GRIP CONTROLLER

INSTRUCTIONS



Contents

PRODUCT OVERVIEW	2
PRODUCT LAYOUT	2
INITIAL SETUP	3
INSTRUCTIONS FOR USE	4
TURBO FUNCTION	4
MACRO PROGRAMMING FUNCTION	5
CONTROLLER VIBRATION	6
CHARGING	6
PRODUCT SPECIFICATIONS	6
PRODUCT CARE AND SAFETY	6



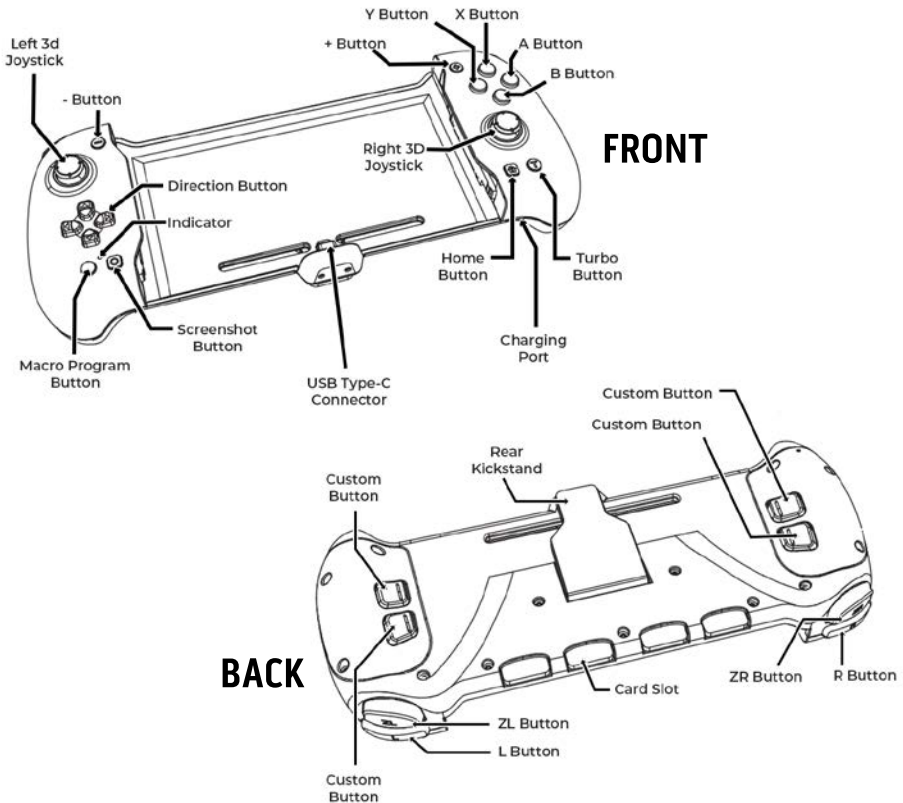
ELITE GRIP CONTROLLER

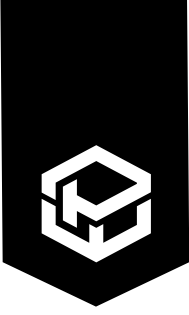
INSTRUCTIONS

Product Overview

Featuring hall effect joysticks to eliminate drift, the Powerwave Switch Pro Grip Controller is engineered to maximise your gaming experience. Enjoy turbo functionality, programmable buttons, dual motor vibration, six-axis gyroscope and ergonomic grip all whilst being able to charge and play through the fast charge compatible USB-C port. Conveniently stores up to 4 game cartridges, simply slide your Nintendo Switch™ into the grip to begin taking your game to the next level!

Product Layout





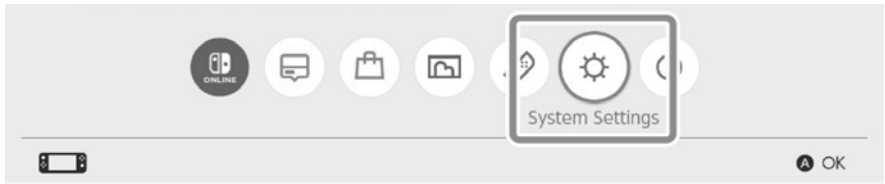
ELITE GRIP CONTROLLER

INSTRUCTIONS

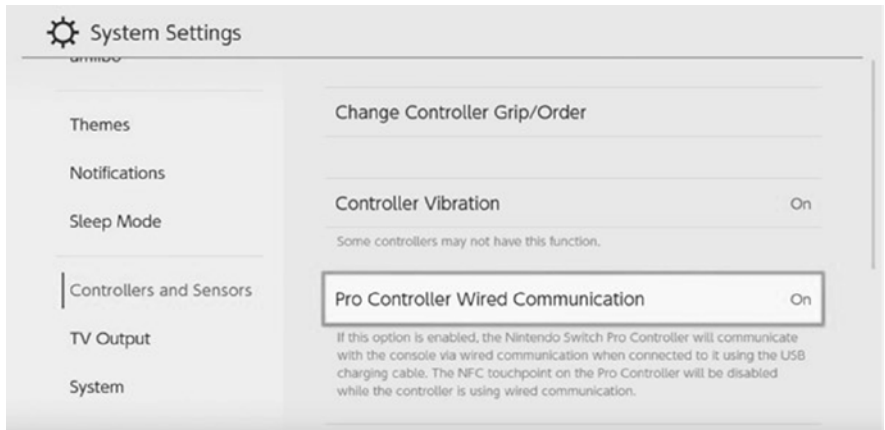
Instructions For Setup

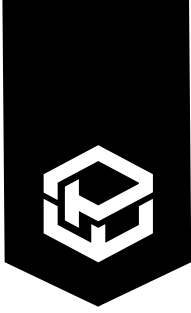
Before use, turn on the Nintendo Switch™ console and adjust the system settings to toggle the Pro Controller Wired Communication controller option to “On”.

HOME Menu > System Settings > Controllers & Sensors > Pro Controller Wired Communication



Toggle the Pro Controller Wired Communication setting to “On”





ELITE GRIP CONTROLLER

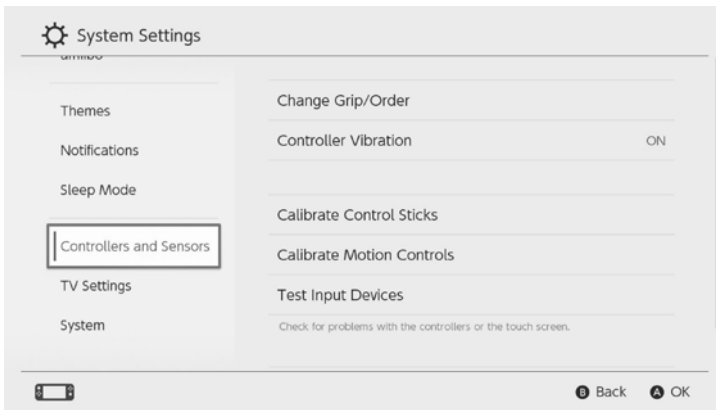
INSTRUCTIONS

Instructions For Use

- Insert the Nintendo Switch™ console screen into the Elite Grip Controller, avoiding holding down or moving the joysticks or buttons during connection.
- Align the USB Type-C connector on the controller into the charging port on the console.
- Calibrate the controller joystick and gyroscope in the following menus, following the on-screen prompts for each joystick and motion sensitivity;

HOME Menu > System Settings > Controllers & Sensors > Calibrate Control Sticks

HOME Menu > System Settings > Controllers & Sensors > Calibrate Motion Controls

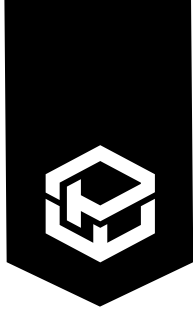


Turbo Function

- The following buttons are supported for Turbo functionality: **A, B, X, Y, R, ZR, L & ZL**

SETTING TURBO

- Hold down the supported button you wish to activate Turbo on, and briefly press the Turbo button once to activate semi-automatic Turbo (burst fire when selected button is pressed).
- Repeating this step again will activate fully-automatic Turbo on the supported selected button. This means pressing the selected button will continue to fire until released.
- Repeating this step a third time will clear Turbo functionality from the selected button.



ELITE GRIP CONTROLLER

INSTRUCTIONS

Turbo Function

CLEARING ALL TURBO

- Hold the Turbo button for 5 seconds until the controller vibrates to clear Turbo functionality from all buttons.

TURBO SPEED ADJUSTMENT

- Low Speed: 5 Bursts Per Second.
- Medium Speed: 12 Bursts Per Second.
- High Speed: 20 Bursts Per Second.
- Default Turbo speed is Medium Speed.
- To adjust up, press Turbo & the Up Directional buttons simultaneously until the controller vibrates.
- To adjust down, press Turbo & the Down Directional buttons simultaneously until the controller vibrates.
- The controller will default to the last Turbo speed mode used.

Macro Programming Function

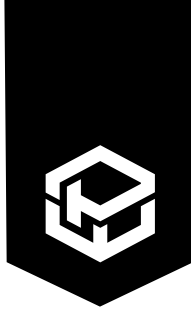
- There are four programmable custom buttons. Each Custom button can be programmed with up to 16 button presses.
- The following buttons are supported for Macro Functionality; +, -, A, B, X, Y, R, ZR, L, ZL, **Directional Buttons (Up, Down, Left, Right), Left Joystick Press & Right Joystick Press.**

SETTING MACRO PROGRAMMING

- Press and hold the Macro Program button for 2 seconds until the white LED Indicator blinks slowly to indicate it is now in programming mode.
- Press the desired combination of buttons in sequence. The white LED Indicator will blink quickly.
- Once the combination of buttons has been entered, press the Custom button you would like to assign the programming to and the white LED Indicator will turn solid indicating successful programming of that sequence to the selected Custom button.
- The Custom button when pressed, will now automatically complete the sequence in the same speed they were programmed with.

CLEARING MACRO PROGRAMMING

- Hold down the Custom button you would like to clear and then press the Macro Program button. The white LED Indicator blinks or turns off to indicate successful clearing of that particular Custom button.
- To clear all Custom button macro programming, hold the Macro Program button for 5 seconds until the white LED Indicator turns off completely. This indicates all macro programming has been cleared.



ELITE GRIP CONTROLLER

INSTRUCTIONS

Controller Vibration

- To turn off controller vibration, please select this option in System Settings;

HOME Menu > System Settings > Controllers & Sensors > Controller Vibration

- There are 4 vibration intensity settings – Weak, Medium, Strong & Off.

Controller vibration is adjustable and defaults to the last setting used.
Please adjust the vibration as per the below instructions to suit your preference.

To adjust controller vibration, press and hold the Z, ZL, R & ZR buttons simultaneously for 3 seconds.
Each adjustment will cycle through the 4 available intensity modes.

Charging

- The USB Type-C port supports both fast charging and regular charging speeds.

Specifications

Input Power	Type-C 15V 2.6A (PD Protocol) / DC 5v 2A Power Supply
Operating Current	60mA
Operating Temperature	0°C to 40°C
Storage Temperature	-40°C to 60°C

Product Care and Safety

- USB Type-C port supports both fast charging and regular charging speeds.
- Keep your user manual for future reference.
- Unplug the input power when console is fully charged or not in use.
- Use this device solely for its intended purposes.
- Keep away from hot surfaces and naked flames and liquids.
- When not in use, store in a cool, dry environment away from direct sunlight.
- Do not apply force or put heavy objects onto the product.
- If the product is damaged, broken or immersed in water, stop use immediately.
- Do not attempt to repair, modify or disassemble the product.
- Clean with a soft, dry cloth to prevent dirt build-up. Do not use chemical solvents, detergents or alcohol.
- Responsibly supervise children when using the product to ensure appropriate use.