



POWERWAVE
ACCESSORIES

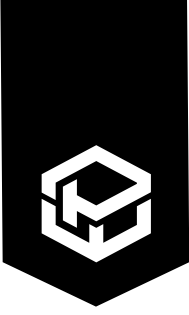
DUAL BATTERY CHARGER

INSTRUCTIONS



Contents

PRODUCT OVERVIEW	2
QUICK START GUIDE	2
INSTRUCTIONS FOR USE	3
PRODUCT SPECIFICATIONS	3
PRODUCT CARE AND SAFETY	4



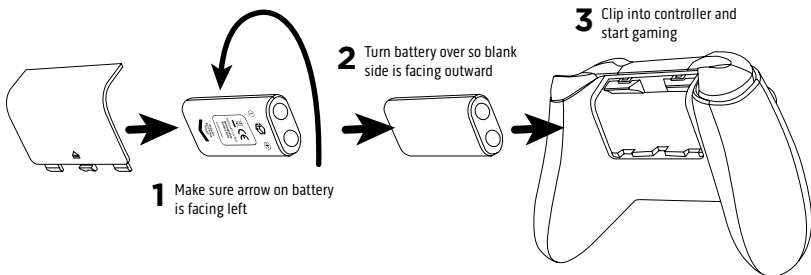
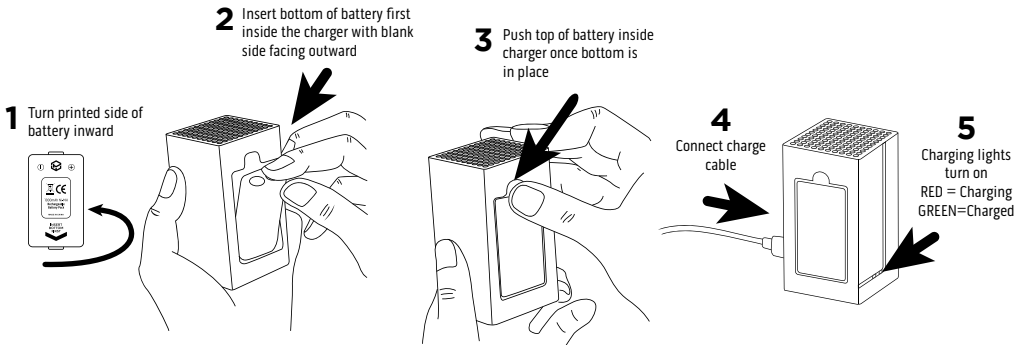
DUAL BATTERY CHARGER

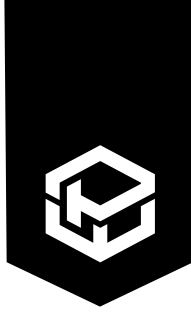
INSTRUCTIONS

Product Overview

Never run out of charge again with the Powerwave Dual Battery Charger for Xbox. Featuring two rechargeable batteries and a charging station, your controller will be game ready every time! Compatible with Xbox One and Xbox S|X controllers, this unique charging solution features an ambient green LED light and charging indicator lights. Power two Xbox controllers simultaneously or keep a spare charged and ready for long gaming sessions, each battery pack can provide up to 21 hours of gameplay on a full charge.

Quick Start Guide





DUAL BATTERY CHARGER

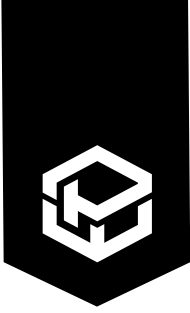
INSTRUCTIONS

Instructions For Use

- Place the battery packs into the charger following the quick start guide, inserting the battery into the bottom prior to locking the battery in at the top. Take care and do not use force to insert the battery pack into the charger.
- Connect the USB-C end of the cable into the Xbox Dual Battery Charger, and connect the USB-A end to an available USB port or 5V/1A AC Adapter.
- The charge indicator lights will turn on alongside the ambient green LED on the top of the charger. Indicating the charger is powered on and ready to use.
- The LED charging indicator lights will be red whilst charging, and green once fully charged. Full charge takes approximately 3-4 hours.
- Remove fully charged batteries by using the small tab on the top to pry the battery pack out.
- Take care and do not use force when inserting and removing battery packs from Xbox controllers.

Product Specifications

Specifications	
Charger Input Voltage	5V
Charging Input	USB-C to USB-A
Charger LED Indicator Lights	Red = Charging, Green = Charged
Battery Voltage	2.4V
Battery Capacity	1000mAh
Battery Type	Rechargeable Ni-MH
Time to Full Charge	3-4 Hours
Average Battery Use	Up to 21 Hours



DUAL BATTERY CHARGER

INSTRUCTIONS

Product Care and Safety

- Keep your user manual for future reference.
- The battery packs should only be used with official Xbox One or Xbox Series X|S controllers.
- Use this device solely for its intended purposes. Do not attempt to use with any other device to avoid any risk of damage to the product as well as the risk of fire, electric shock or short circuit.
- Please use the included USB-C charging cable.
- For indoor use only.
- Keep away from hot surfaces and naked flames.
- Do not immerse in any liquid or have the product make contact with liquids.
- When not in use, store in a cool, dry environment away from direct sunlight.
- Do not apply force or put heavy objects onto the product.
- If the product is damaged, broken or immersed in water, stop use immediately.
- Do not attempt to repair, modify or disassemble the product.
- Clean the product with a soft, dry cloth to prevent dirt build-up. Do not use chemical solvents, detergents or alcohol.
- Please dispose of batteries responsibly.
- Keep out of reach of small children.